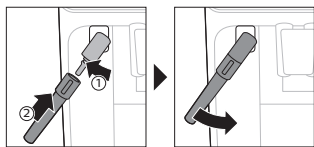


## 5. Assembling the classic milk frother (specific types only)



## Brewing drinks

### General steps

- 1 Fill the water tank with tap water and fill the bean hopper with beans.
- 2 Press the on/off button to switch on the machine.
  - The machine starts heating up and performs the automatic rinsing cycle. During heating up, the lights in the drinks icons light up and go out slowly one by one.
  - When all lights in the drink icons light up continuously, the machine is ready for use.
- 3 Place a cup under the coffee dispensing spout. Slide the coffee dispensing spout up or down to adjust its height to the size of the cup or glass you are using (Fig. 1).

### Personalizing drinks

This machine allows you to adjust the settings of a drink to your own preference. After selecting a drink you can:

- 1 Adjust the aroma strength by tapping the aroma strength icon (Fig. 2). There are 3 strengths, the lowest is the mildest and the highest is the strongest.
- 2 Adjust the drink quantity by tapping the drink quantity (Fig. 3) and/or the milk quantity icon (specific types only). There are 3 quantities: low, medium and high.

**i** You can also adjust the coffee temperature to your own preference (see 'Adjusting the coffee temperature').

### Brewing coffee with beans

- 1 To brew a coffee, tap the drink icon of your choice.
  - The aroma strength and quantity lights go on and show the previously selected setting.
  - You can now adjust the drink to your preferred taste (see 'Personalizing drinks').
- 2 Press the start/stop ► button.
  - The light in the drink icon flashes while the drink is being dispensed.

**i** Specific types only: An americano is made of espresso and water. When you brew an americano, the machine first dispenses an espresso and then water.

- 3 To stop dispensing coffee before the machine is finished, press the start/stop ► button again.

**i** To brew 2 coffees at the same time, tap the drink icon twice. The 2x light lights up.

### Brewing milk-based drinks with LatteGo (milk container)

**A** LatteGo consists of a milk container, a frame and a storage lid. To avoid leakage, make sure the frame and the milk container are properly assembled before you fill the milk container.

- 1 To assemble LatteGo, first insert the top of the milk container under the hook at the top of the frame (Fig. 4). Then press home the bottom part of the milk container. You hear a click when it locks into place (Fig. 5).

**Note:** Make sure that the milk container and the frame are clean before you connect them.

- 2 Slightly tilt LatteGo and put it on the hot water spout (Fig. 6). Then press it home until it locks into place (Fig. 7).
- 3 Fill LatteGo with milk up to the level indicated on the milk container for the drink you are brewing (Fig. 8). Do not fill the milk container beyond the maximum indication.

**i** If you have personalized the milk quantity, you may need to fill the milk container with more or less milk than indicated for this drink on LatteGo.

**🔔** Always use milk coming directly from the fridge for optimal results.

- 4 Place a cup on the drip tray.
- 5 Tap the milk-based drink icon of your choice.
  - You can now adjust the drink to your own preference (see 'Personalizing drinks').
- 6 Press the start/stop ► button.
  - The light in the drink icon flashes while the drink is being dispensed. When you brew a cappuccino or latte macchiato, the machine first dispenses milk and then coffee. When you brew caffè latte, the machine first dispenses coffee and then milk.
  - To stop dispensing milk before the machine has dispensed the preset amount, press the start/stop ► button.
- 7 To stop dispensing the complete drink (milk and coffee) before the machine is finished, press and hold the start/stop ► button.

## Frothing milk with classic milk frother

**🔔** Always use milk coming directly from the fridge for the best foam quality.

- 1 Tilt the black silicone handle on the machine to the left and slide the milk frother onto it (Fig. 9).
- 2 Fill a milk jug with with approx. 100 ml milk for cappuccino and approx. 150 ml milk for latte macchiato.
- 3 Insert the milk frother approx. 1 cm into the milk.
- 4 Tap the steam icon (Fig. 10).
  - The light in the steam icon goes on and the start light starts pulsing.
- 5 Press the start/stop ► button to froth the milk (Fig. 11).
  - The machine starts heating up, steam is forced into the milk and the milk is frothed.
- 6 When the milk foam in the milk jug has reached the required volume, press the start/stop ► button again to stop frothing milk.

**i** Never froth milk longer than 90 seconds. The frothing automatically stops after 90 seconds.

**i** You do not have to move the milk jug during milk frothing to get the best milk froth quality.

## Brewing coffee with pre-ground coffee

You can choose to use pre-ground coffee instead of beans, for example if you prefer a different coffee variety or decaffeinated coffee.

- 1 Press the on/off button to switch on the machine and wait until it is ready for use.
- 2 Open the lid of the pre-ground coffee compartment and pour one leveled measuring scoop of pre-ground coffee into it (Fig. 12). Then close the lid.

## 10 English

- 3 Place a cup under the coffee dispensing spout.
- 4 Select a single drink.
- 5 Press the aroma strength icon for 3 seconds (Fig. 13).
  - The pre-ground coffee light goes on and the start light starts pulsing.
- 6 Press the start/stop ► button.
- 7 To stop dispensing coffee before the machine is finished, press the start/stop ► button again.

**i** With pre-ground coffee you can only brew one coffee at a time.

**i** Pre-ground coffee is not a setting that is saved as a previous selected strength setting. Each time you want to use pre-ground coffee, you need to press the aroma strength icon for 3 seconds.

**i** When you select pre-ground coffee, you cannot select a different aroma strength.

## Dispensing hot water

- 1 If attached, remove LatteGo or the milk frother.
- 2 Tap the hot water icon (Fig. 14).
  - The drink quantity lights go on and show the previous selected drink setting for hot water.
- 3 Adjust the hot water quantity to your preference by tapping the drink quantity icon (Fig. 3).
- 4 Press the start/stop ► button.
  - The light in the hot water icon flashes and hot water is dispensed from the hot water spout (Fig. 15).
- 5 To stop dispensing hot water before the machine is finished, press the start/stop ► button again.

## Adjusting machine settings

### Adjusting the stand-by time

- 1 Press the on/off button to switch off the machine.
- 2 When the machine is switched off: press and hold the Calc / Clean icon (Fig. 16) until the Calc / Clean light and the Aroma strength lights go on (Fig. 17).
- 3 Tap the Aroma strength icon to select the required stand-by time: 15, 30, 60 or 180 minutes. Respectively 1, 2, 3 or 4 lights of the Aroma strength icon light up.
- 4 When you have finished setting the stand-by time, press the start/stop button. The machine switches off.
- 5 Press the on/off button to switch on the machine again.

### Programming the highest default setting of your drinks

The machine has 3 default settings for each drink: low, medium, high. You can only adjust the quantity of the highest setting. The new quantity can be stored as soon as the start light starts to pulse.

**i** Before you start programming the quantity of a milk drink, assemble LatteGo and pour milk in it.

- 1 To adjust the highest quantity setting, press and hold the icon of the drink you want to adjust for 3 seconds.

- The upper light of the drinks quantity icon and the upper light of the milk quantity icon (specific types only) starts to pulse and the start/stop ►■ button starts to pulse, indicating that you are in programming mode.
- 2 Press the start/stop ►■ button. The machine starts to brew the selected beverage.
    - The start light lights up continuously at first. When the machine is ready to store the adjusted volume, the start/stop light starts to pulse.
  - 3 Press the start/stop ►■ button again when the cup contains the desired quantity of coffee or milk.
    - In case of cappuccino or latte macchiato, first the milk will be dispensed. Press the start/stop ►■ button when the cup contains the desired milk quantity. The machine automatically starts dispensing the coffee. Press the start/stop ►■ button again when the cup contains the desired quantity.

After you have programmed the new highest default quantity for a drink, the machine will dispense this new amount each time you select the highest quantity of this drink.

**i** You can only adjust the highest default quantity level.

**i** If you want to go back to the default quantity settings, see 'Restoring factory settings'.

## Adjusting the coffee temperature

### Machines without temperature icon

- 1 Press the on/off button to **switch off** the machine.
- 2 When the machine is switched off: press and hold the coffee quantity icon until the lights in this icon go on (Fig. 18).
- 3 Tap the quantity icon to select the required temperature: normal, high or max.
  - Respectively 1, 2 or 3 lights are on.
- 4 When you have finished setting the coffee temperature, press the start/stop ►■ button.
- 5 Press the on/off button to switch on the machine again.

**i** If you do not switch off the machine yourself, it will switch off automatically after some time.

### Machines with temperature icon (EP3221 only)

- 1 Tap the coffee temperature icon repeatedly to select the desired temperature.

## Restoring factory settings

The machine offers you the possibility to restore the drinks default settings at any moment.

**i** You can only restore the default settings when the machine is switched off.

- 1 Press the on/off button to switch the machine off.
- 2 Press and hold the espresso icon for 3 seconds.
  - The middle lights in the drink setting icons light up. The start/stop light starts to pulse, indicating that the settings are ready to be restored.
- 3 Press the start/stop ►■ button to confirm you want to restore the settings.
- 4 Press the on/off button to switch on the machine again.